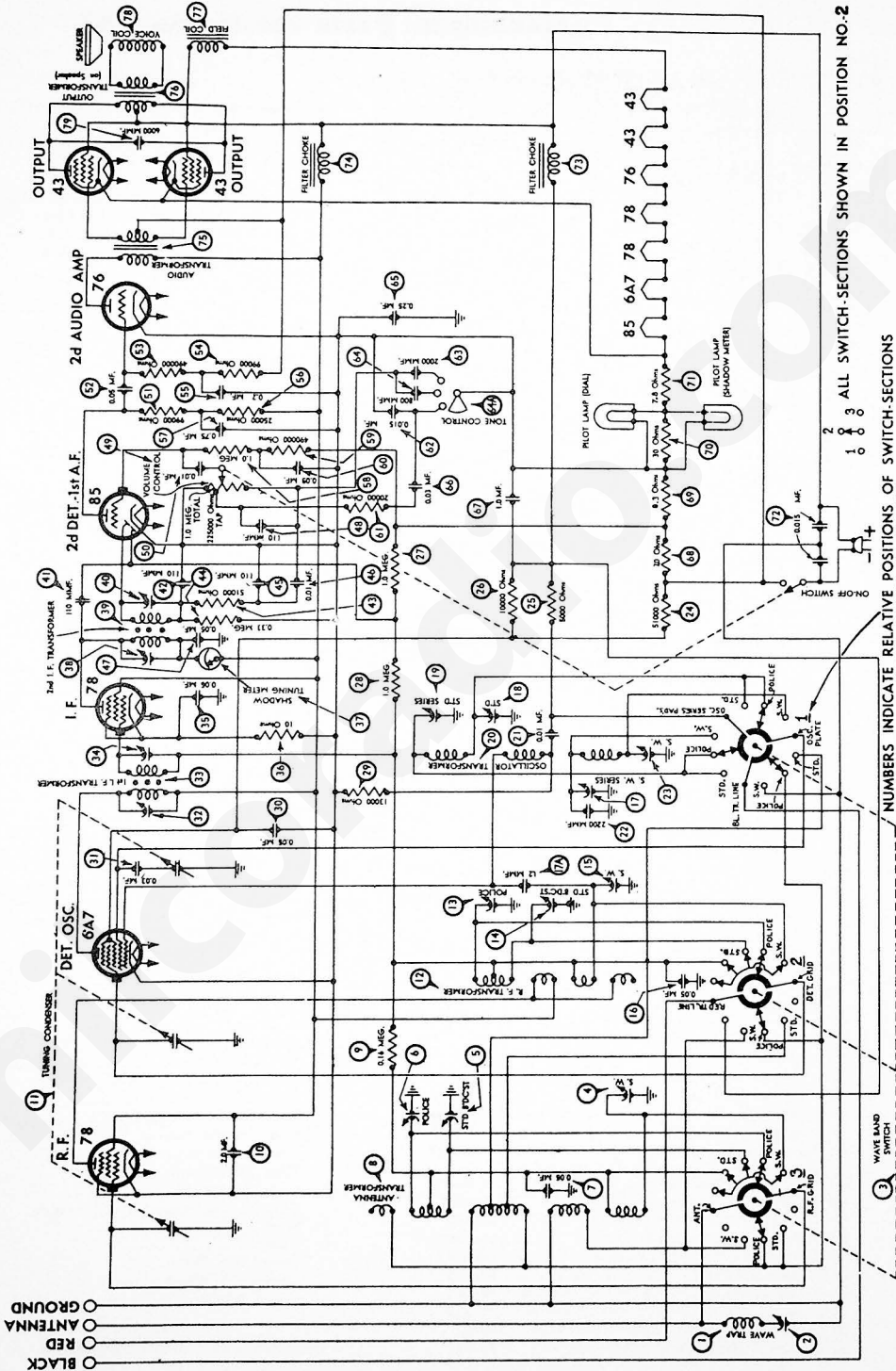
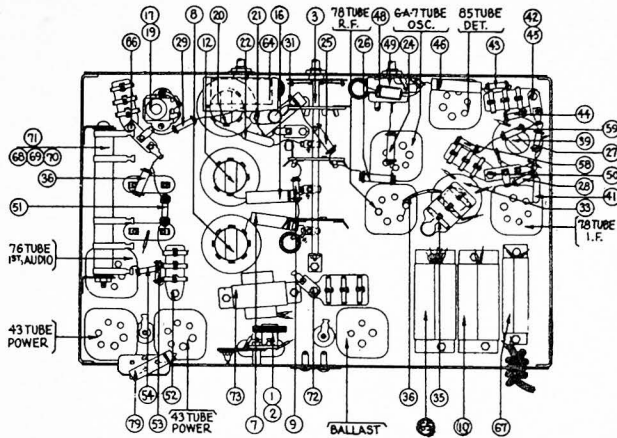


MODEL 641 (D. C.)



I. F. - 460 K. C.

Replacement Parts for Model 641



Description	Part No.	Description	Part No.	
1 Coil—Wavetrap	38-6972	40 Padder	Part of 30	
2 Condenser—Wavetrap		41 Condenser (110 mmf.)	30-1031	
3 Waveband Switch	42-1130	42 Condenser (110 mmf.)	8035-DU	
4 Padder	Part of 8	43 Resistor (51,000 ohms)	6098	
5 Padder	Part of 8	44 Resistor (330,000 ohms)	33-1200	
6 Padder	Part of 8	45 Condenser (110 mmf.)	Part of 42	
7 Condenser (0.05 mfd.)	30-4020	46 Condenser (0.01 mfd.)	30-4169S	
8 Antenna Transformer	32-1827	47 Condenser (0.05 mfd.)	Part of 33	
9 Resistor (160,000 ohms)	33-1191	48 Condenser (110 mmf.)	30-1031	
10 Condenser (2.0 mfd.)	30-4355	49 Volume Control (1. meg.)	33-5116	
11 Tuning Condenser Gang	31-1645	50 Condenser (0.01 mfd.)	3903-SU	
12 R. F. Transformer	32-1828	51 Resistor (99,000 ohms)	6099	
13 Padder	Part of 12	52 Condenser (0.05 mfd.)	3615-SU	
14 Padder	Part of 12	53 Resistor (490,000 ohms)	6097	
15 Padder	Part of 12 S.W.	54 Resistor (99,000 ohms)	6099	
16 Condenser (0.05 mfd.)	30-4020	55 Condenser (0.2 mfd.)	Part of 44	
17 Padder (Nut S.W.)	31-6027	56 Resistor (25,000 ohms)	4516	
17A Condenser (1.2 mmf.)		57 Condenser (0.75 mfd.)	Part of 53	
18 Padder	Part of 20	58 Resistor (1. meg.)	33-1096	
19 Padder (Screw, Broadcast)	Part of 17	59 Resistor (490,000 ohms)	6097	
20 Oscillator Transformer	32-1829	60 Condenser (0.09 mfd.)	Part of 50	
21 Condenser (0.01 mfd.)	30-4169	61 Resistor (20,000 ohms)	33-1178	
22 Condenser (2200 mmf.)	30-1057	62 Condenser (0.015 mfd.)	Part of 64A	
23 Padder (S.W.)	Part of 20	63 Condenser (2000 mmf.)	Part of 64A	
24 Resistor (51,000 ohms)	6098	64 Condenser (800 mmf.)		
25 Resistor (5000 ohms)	5310	64A Tone Control	30-4333	
26 Resistor (10,000 ohms)	4412	65 Condenser (0.25 mfd.)	30-4356	
27 Resistor (1.0 meg.)	33-1096	66 Condenser (0.03 mfd.)	8318-SU	
28 Resistor (1.0 meg.)	33-1096	67 Condenser (1.0 mfd.)	30-4357	
29 Resistor (13,000 ohms)	8267	68 Resistor (7 ohms)	B.C.	
30 Condenser (0.05 mfd.)	Part of 40	69 Resistor (8.3 ohms)		33-3214
31 Condenser (4.03 mfd.)	10-4025	70 Resistor (30 ohms)		
32 Padder	Part of 33	71 Resistor (7.8 ohms)		
33 1st I. F. Transformer	32-1711	72 Condenser (0.015 mfd.) Double	3793-DU	
34 Padder	Part of 44	73 Choke	32-7476	
35 Condenser (0.05 mfd.)	3615-DG	74 Choke	32-7213	
36 Resistor (10 ohms)	33-3041	75 Input Transformer	32-7211	
37 Shadow Meter	45-2083	76 Output Transformer (on speaker)	2550	
38 Padder	Part of 20	77 Speaker Model K-13 (641-B)		
39 2nd I. F. Transformer	32-1830	78 Speaker Model H-10 (641-X)		
		79 Condenser (.006 mfd.)	30-4125	
		Tube Shield Base	28-2725	
		Tube Shield Body	28-2726	
		R. F. Shield	38-6938	
		I. F. Shield	38-6808	
		4-prong Socket	27-6042	
		5-prong Socket	27-6035	
		6-prong Socket	27-6036	
		7-prong Socket	27-6037	
		Speaker Socket	27-6043	
		Bezel	28-3164	
		Bezel Gasket	27-8036	
		Bezel Glass	27-8008	
		Bezel Frame Gasket	27-7972	
		Dial	27-5125	
		Hub and Set Screw Assembly	31-1550	
		Spring Clamp	28-2837	
		Pilot Lamp	34-2068	
		Knob (Station Selector)	27-4206	
		Knob (Fine Tuning)	27-4207	
		Knob (Volume Control, Tone Control)	27-4208	
		Knob (Waveband Switch)	27-4225	